



Kelburn Normal School



MAY 2016

Kelburn Normal School is embarking on an exciting journey to transform our campus to meet our vision for teaching and learning, now and into the future. This newsletter aims to inform and update our school community on the redevelopment project.

Our vision for teaching and learning

“Where students learn creatively and strive for excellence, preparing for lifelong learning”

Kia auaha te ako o nga akonga me te whai i te iti kahurangi mo te akoranga turoa

The purpose of our curriculum is to educate our children by engaging them in a powerful, collaborative learning culture. The teaching and learning is personalised; the children learn to work together combining a variety of approaches.

We are developing the children as lifelong learners, and in this process, technology and the arts play key roles. Our vision is for children to become both creative learners and achieve to their potential.

Over the last two years, teachers and children have developed flexible ways of learning together from small groups, through class and syndicate groups, to project groups; this flexibility is enhancing social learning and relationships. We value the powerful sense of belonging, collaboration, and purpose that our class groups create; therefore, classes will remain and retain their role as the home group. Additionally, we want to create innovative learning spaces that will allow children to learn as a class group, and also in other groupings. The use of technology will be key here.

Innovative learning environments

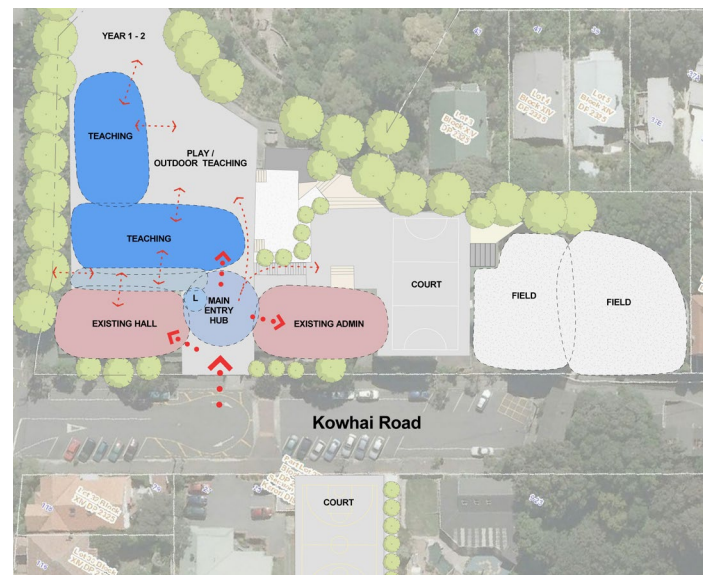
The world we are preparing our children for is always changing. Education needs to keep pace with this constant evolution. Innovative learning environments are capable of adapting as educational practice evolves.

Innovative learning environments encourage collaboration and inquiry for both children and teachers. They allow the teacher to teach in a range of styles and groups to best meet the strengths and needs of a diverse group of children.

The Ministry of Education has been very supportive in working with the school to design buildings that will support the constantly evolving way of teaching and learning at Kelburn.

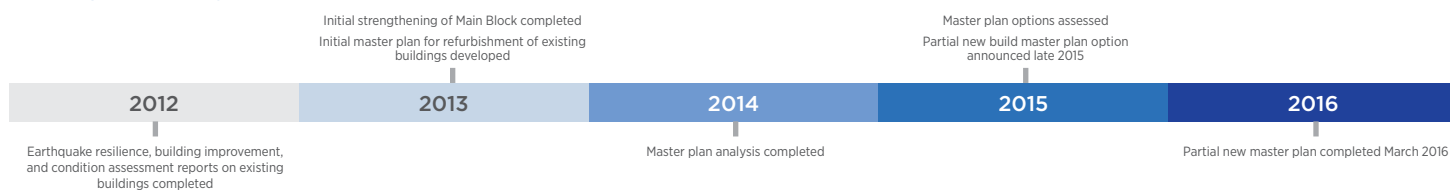


- | | |
|-----------------------------------|--------------------------------------------------|
| 1 Administration | 5 Visual Resource Centre (BLENNZ) |
| 2 Classrooms | 6 School Cottage (after school care and storage) |
| 3 Assembly Hall | 7 Existing temporary buildings |
| 4 Ngaio Block (Junior Classrooms) | |



Indicative master plan

Our journey so far



Into the future



Teaching and learning during construction

During construction of the new teaching block our school programmes will continue as usual in the current buildings.

The new school building will be constructed on the top court; the construction zone will be fenced off to ensure the children's safety. Play space will be restricted during the building process but we will ensure that there is adequate and safe play spaces.

When the new school building is complete, all the children, including Ngaio, will move in and the old buildings will be fenced off and demolished. The final phase will be the construction of the new playgrounds.

Health and safety

The new building will comply 100% with new building standards. Remaining buildings (hall and administration) will be upgraded to Ministry and council requirements. Safety of students, staff and general public during construction will have high priority.

Health and safety plans will be put in place prior to any work proceeding on site, and will be actively managed throughout the construction period. Construction zones will be in place during construction, with no access available for students, staff, or the general public.

Upland Road trees

The trees are important to all of us - the school and the general public.

Some trees will require pruning to enable construction of the new building. Pruning will only be required on the school side.

A specialist report will be completed with advice on how this work can be completed successfully to maintain the health of the trees.

Next steps

Next week the plans will be available on the school website.

We invite you to review the plans and come along to a community meeting in the school hall on 19 May at 7:00 pm to discuss them.

The lead designers, Ministry of Education Project Manager, school staff and the Board will be there to discuss the plans with you.

FOR MORE INFORMATION

Kelburn Normal School
04 475 9351 or admin@kelburnnormal.school.nz