

KELBURN NORMAL SCHOOL NEWSLETTER

NGĀ TĀTARAKIHI O AHUMAIRANGI PĀNUI

THE BIRD'S EYE VIEW ISSUE 19 WEEK 8, TERM 2 2024 ~

RĀHINA 17 PIPIRI ~ MONDAY 17 JUNE



Where students learn creatively and strive for excellence in preparing for lifelong learning
Kia auaha te ako a ngā ākonga me te whai i te iti kahurangi mō te akoranga tūroa

Monday 17 June - Board of Trustees meeting at 6.30 pm and PTA meeting at 7 pm in the Tupu teaching space.

Wednesday 19 June - Celebration of Learning from 3.15 pm to 5 pm

Friday 21 June - School hui hosted by Māia @ 9.30 am, Jumping June Jump Off 11:40am - 1:00pm

Kia ora koutou e te whānau,

Our kura continues to hum along. We had a busy week at kura last week with a number of events, including the magician Mr Wisnowski (thank you PTA) and Tupu hosted the school hui on Friday.

Last week we hosted three of our ex-Kelburn students from Wellington College (Conor, Srian, and Henry), and this was followed by a visit from Greta, Stella, Ella, Isobel, Shirin sharing a presentation from Wellington Girls. College and primary school life are similar, but very different. It is heartening to see how well-prepared these students were for the outside world and how much they have been taking advantage of the multitude of opportunities at college. One thing they were unanimous about was how well Kelburn, and our width of opportunities, had prepared them for college life. Whatever the varied strengths and skills that students have, being involved in the arts and making the most of school, gives students a better experience of school. The Kāhui Ako has given us a deeper connection to the colleges, and so the flow of information and engagement between primary and secondary is strong. Through this engagement, we know that Kelburn prepares students really well for college. It was fantastic to hear our ex-students reflecting on that.

Kāhui Ako - Last Wednesday, our Kāhui Ako hosted Rob Cope at Wellington College. Over 500 people attended this excellent and rather sobering talk. Rob explained the dangers of the online world, explicitly talking about how these dangers are fully available to our children through their phones - Snapchat, TikTok, Facebook, and Discord (all R13 sites). He also talked about how children have pestered and pressured adults to enable this, how 7-12 year olds had very easy access to R18 material and then talked about the corresponding effects on their mental health because it is a challenging space to be in and they are so young. It was very challenging stuff. The next day Rob was interviewed on RNZ, so I invite you to take time and - [Listen here](#). Next term, our Kāhui Ako speaker is the fantastic Judith Locke, author of The Bonsai Child. This talk will be excellent.

Kura Ahurea - In our Ara newsletters, you will read reflections on the work that we are doing on our Culturally Sustaining Pedagogy. It is exciting to be involved in, and Kura Ahurea provides a Te Ātiawa ki Te Whanganui a Tara/Taranaki Whānui perspective on local historical narratives, tikanga, and kawa. At present, you can see how Whanake and Whānui are developing their plays through the use of the temperament of the Atua (Gods). At Kelburn we are learning so much more than just a few narratives, such as Māui and the Sun, and this is an extension of the work we did in 2019 with Rawhiri Hundle and the Creatives in Schools project and now with Jason and Jeremy as our kaiako. The Aotearoa histories curriculum has been in place for a while now, and through our engagement with Te Ātiawa we are learning the local history of Wellington through an iwi lens.

Celebration of Learning - This Wednesday, 19 June is the Celebration of Learning from 3.15 to 5.00pm. The tamariki will host you into the learning spaces to share the work they have completed so far from the first half-year efforts. It's

always lovely to take the time to go through the books and hear the student's voice as to what each learning experience was about in context.

Jump Off - This Friday the 21st is the Jump off with skipping ropes. The tamariki have been enjoying this opportunity, which we have revitalised after a break due to building 'alterations' and Covid. This fundraising supports the *Heart Foundation*, a charity we have supported like the Wellington Free Ambulance through Onesie day, Child Cancer through Red Nose Day and Daffodil day. This community service dimension is important to our school's kaupapa and our sense of whanaungatanga and manaakitanga.

PTA Movie Fundraiser – Sunday June 23rd – 2.30pm

Despicable Me 4, the latest film in the Despicable Me franchise, will be released in June 2024, and we have an exclusive screening booked. Tickets are available NOW on MyKindo <https://shop.tgcl.co.nz/>
Invite your friends and family. What an easy and fun way to help fundraise for the school!

Matariki holiday - This year, school is closed next Friday 28 June for the Matariki holiday. Our whānau Matariki celebration this year is in term 3, week one, Thursday 25 July.

Thank you for your continued support for our kura.
Ngā mihi nui,
Andrew

Growing Resilient Kelburn Kids

17/6

Resilient Tamariki Know What is Within & Beyond their Control

Some of our tamariki worry about things, and this is perfectly natural. At kura we talk to the tamariki about their circles of control- things within their control and things beyond their control. Drawing a circle and placing all the things that ākongā can control, e.g. my thoughts, my feelings, my responses to others, my behaviour, my words, my attitude etc and then on the outside of the circle, all the things that are beyond their control e.g. what others say to me, what will happen in the future, other's choices and actions, past mistakes etc. This can help to tame children's worries and anxieties about things. It is helpful to be specific with your child's worries or concerns. Give it a go.

Later in this newsletter, there is a poster, "Confidence, Things I Can Control", that you may find helpful. Keep up your positive parenting! - Danielle

Matariki

Matariki is a small cluster of stars, also known as the Pleiades, in the Taurus constellation. In New Zealand, it comes into view low on the north-eastern horizon, in the tail of the Milky Way, just before dawn in midwinter. This heralds the Māori New Year and the changing of the seasons. Near the end of the year, we look at the setting of Matariki. The waka is at a 90-degree angle. If you go to see the horizon of the West Coast at sunset, you will see the waka disappearing—the setting of Matariki. The setting is just as important as the rising.

Matariki is the front of Te Waka o Rangī.

As the waka travels across the sky, it is the role of Taramainuku to gather those who have passed, and they then adorn the waka on the ihi. They travel with Taramainuku across the sky for 11-12 months.



Whanake Newsletter Update, week 8

Tāne and ngā Kete o te Wananga

This term in Whanake, we have been exploring the pūrākau of Tāne and the three kete of knowledge as our literacy focus. We have been devising plays, and working on writing across different genres to support our understanding. We are looking forward to sharing our plays with our whānau next week.

Below are some excerpts from Whanake Tahi's suspense writing.

My legs feel like jelly. A cold wind like death sends a shiver down my spine. When will I get out of here? I hear creaking doors and a mean voice saying "you can't do this, you're too weak". - Oscar

Tarantulas scuttle across the walls. My heart is thumping, my bones rattle, it feels like dinosaurs are invading me. - AJ

Everything was quiet except for the occasional whisper of wind. A brick wall loomed ahead of me. Limp skeletons dangled off dead trees. I felt a searing pain in my right shoulder. - Matthew

Red shiny blood drizzled down the brick wall as I entered the labyrinth. Suddenly a cruel voice said "you'll never make it, you're such a fool". I howled with laughter. I knew that was not right. - Tessa

"I can't turn back now" I cried into the silence. Suddenly a brick wall materialised out of nowhere. Then a cruel whisper rang out. "Now what are you going to do" it whispered in a mocking voice. - Petra

In Whanake Rua we have been exploring the pūrākau in visual form. We thought about the part of the story that most appealed to us and then sketched this in our visual diaries. After this, we enlarged it, going over the outline in a sharpie pen. Our last step was to add paint, but we were only allowed to use the following ngā tae - kakariki, pango, whero or mā. They look quite striking!

By James, Adele and Thomas.



By David,
Harrison and
Greta



Science

Our investigation into simple circuits required patience and perseverance as we experimented with how to make different simple circuits operate (with some trial and error involved). We then made predictions and carried out tests to find out whether different materials would conduct electricity and complete the circuit.

Maths

In mathematics, we have been focusing on addition and subtraction strategies. In particular, we have been learning how we can use place value partitioning and making tens to help us solve different problems more efficiently. Alongside this, we have been working together to develop our reasoning skills, so that we can share our ideas and strategies with each other.



Looking Ahead - Event Dates - Term 2, 2024

You can see the times and add these events to your calendar by using the KNS App

Week	Date	Event
Week 8	Monday 17 June	WC Open morning at 9 am - 11 am - Registrations are not required. All students and their families are welcome to attend. BoT Meeting @ 6.30 pm PTA Meeting at 7 pm in the Tupu Space
	Tuesday 18 June	WC Open morning at 9 am - 11 am - Registrations are not required. All students and their families are welcome to attend.
	Wednesday 19 June	Celebration of Learning from 3.15 pm to 5 pm
	Thursday 20 June	WGC Open Day
	Friday 21 June	School hui hosted by Māia @ 9.30 am - 10:30 am Jumping June Jump Off 11:40am - 1:00pm
	Sunday 23 June	PTA Movie fundraiser - Despicable Me 4 Penthouse Cinema Brooklyn at 2:30pm
Week 9	Wednesday 26 June	Whanake Tahī Bishop Play Sharing @ 2pm
	Thursday 27 June	Whanake Rua Blair Play Sharing @ 12 pm Whanake Toru Harper Play Sharing @ 2pm
	Friday 28 June	Matariki - Public Holiday - school closed.
Week 10	Tuesday 2 July	Māia Doc Edge Film - Habana Shakes 12.30 pm to 3 pm Whanui Play Sharing with whānau 6pm - 8pm
	Wednesday 3 July	Māia Doc Edge Film - I am the river and the river is me - 12.30 pm to 3 pm

Thursday 4 July	Band Concert 11am - 12pm Kamala's students recorder concert @ 1pm
Friday 5 July	Red Nose Day

PTA News

Movie Fundraiser – Sunday June 23rd – 2.30pm

Despicable Me 4, the latest film in the Despicable Me franchise, will be released in June 2024, and we have an exclusive screening booked. Tickets are available NOW on MyKindo <https://shop.tgcl.co.nz/>
Invite your friends and family. What an easy and fun way to help fundraise for the school!

Mr Wizowski, who couldn't make our rescheduled date for the picnic, is now going to bring his circus act and perform to the whole school on Wednesday 12 June.

We're very nearly sold out of the KNS Tea Towels. They are available at the school office for \$20 for one or \$50 for three.

Our next PTA meeting is scheduled for Monday, 17th June 7pm in the Tupu Space. Everyone is welcome.

Come join KNS Families at the Movies!



School Notices

Please volunteer to help our library!

We regularly buy new books for our library. Help from parents/caregivers significantly speeds up the process of getting books ready for our children to read. We have a small but brilliant team of parents who have been helping us, but it would be great to have some more help. We have kits ready to go out to parents/caregivers to duraseal new books at home in your own time. There are approximately 10 - 20 books in each 'home kit'. We prefer that parents have some experience with durasealing in general. Please email library@kelburnnormal.school.nz if and when you could help. Thank you from your KNS library team.

Parking - Kowhai Road Quick Stop Zone - Please do not leave your car unattended in this zone. It is a quick drop off or pick up - tamariki need to be able to get in and out of your car unassisted. If the zone is full you will need to exit Kowhai Road and try again or park further away and walk back to school. Do not stop on the broken yellow lines.

Parking Boundary Rd ~ Please do not park in front of the garages on Boundary Road. We have received complaints from neighbours who regularly have their vehicles blocked in by parents who have parked in front of their garage.

Wellington College Open Mornings and Enrolment Information

This year our open mornings are as follows:

Monday 17 June 2024 at 9.00am

Tuesday 18 June 2024 at 9.00am

This is an opportunity for new students and their families to look around the Wellington College facilities and meet the Senior Leadership Team.

Registration is not required. All students and their families are welcome to attend.

Please note that out-of-zone applications for Year 9 students for 2025 close on Wednesday, 24 July 2024.

The Year 9 out-of-zone ballot is held on Monday, 29 July 2024 and Parents/Caregivers will be notified of the outcome of the Ballot by Thursday, 1 August 2024.

In-zone enrolments continue.

Thank you

Ngā mihi, Lynda Woods, Enrolment Manager

Wellington Girls College Open day Thursday 20 June

The secondary schools in the Wellington Region would greatly appreciate it if Year 8 parents and Whānau could enrol their young person for the 2025 academic year by submitting an application through the online enrolment form provided by your chosen secondary school **prior to Wednesday, 24 July 2024**. This assists each school with their planning for the 2025 academic year, including allocating resources, class sizes, organising facilities and teaching staff.

Some reminders for school and the winter months :-

- Please name all clothing, lunchboxes, drink bottles and tupperware so we can find the owner if left outside.
- The learning spaces open at 8.30am so tamariki cannot go inside until then.
- As the weather is colder, please make sure that the tamariki come to school with warm clothing to wear outside. We only stay inside if it is raining.
- If your child is going to be away then please notify the school via the App, ring 04 4759351 or email admin@kelburnnormal.school.nz
- For those using the drop-off zone on Kowhai Rd please ensure you adhere to the time restrictions.

Enrolling for Bee Healthy - If your child missed out you are able to make an appointment directly with Bee Healthy.

There's two easy ways to enrol your child with Bee Healthy Regional Dental Service:

1. Complete an [online enrolment form](#), or
2. Visit your nearest [Bee Healthy Dental Clinic](#) and complete an enrolment form.

Babies born in the Wellington Region are enrolled at birth with Bee Healthy.

If you have questions about enrolment, eligibility, or unsure if your child is enrolled with Bee Healthy, please call 0800 TALK TEETH (825 583).

If you have changed address or phone number/s and need to update your details [click here](#)

KNS Parent Chat WhatsApp Group

The PTA has a WhatsApp group to enable all the KNS community to communicate with each other about all things KNS.

If you want to join this group, please email us on pta@kelburnnormal.school.nz with the following information:

- Your name
- Your phone number
- Your child's name and class

School App - Contact Details - Please check your contact details on the school app to ensure we have the correct details. If changes are needed please email these to admin@kelburnnormal.school.nz

Teacher Messages - a sort option has been added to the teacher messages section on the school app so parents can easily search for the latest message in date order.

Downloading the app - for those needing assistance with downloading the app please check the app [login video](#) on our website for parents

EzLunch Menu - Subway Wednesday / Pizza Thursday / Sushi Friday [Click here for the Menu](#)

School Clubs and Ensembles Timetable

Monday	Tuesday	Wednesday	Thursday	Friday
Xylo Beats - (Ys 4,5, 6) 8.30 - 9.30am Katharina	Orchestra - 8.30 - 9.30am Katharina & Rachel	Piccolo - (Yrs 4, 5, 6, 7) 8.30 - 9.30am Anna Sedcole	Lyrice - Yrs 5 - 8 8.30am-9.30 am Anna Sedcole	Kapa Haka - Yrs 5 - 8 Henare 8.30 - 9.30am

Mahler Room	Mahler Room	Mahler Room	Mahler Room	Hall
Kapa Haka - Y1-4 1.30 - 2pm Miss Bishop & Jeremy Hall	Code Club - 1.10 - 1.40 Miss Bishop / Sanders Māia space	Tui Choir - 8:50am Years 2 & 3 Ms Wilby Hall		Xylofun 8.30 - 9.00 am Katharina Mahler Room
Eco Club - Miss Molloy 1.10-1.40 Tupu space		Chess Club - Alistair Button 12.40 - 1.20pm Māia		

School Term Dates 2024

Term	Start Date	End Date	Public Holidays/Teacher Only Days
Term 2	Monday 29 April	Friday 5 July	Friday 31 May - Teacher Only Day Monday 3 June - King's Birthday Friday 28 June - Matariki
Term 3	Monday 22 July	Friday 27 September	Friday 30 August - Teacher Only Day
Term 4	Monday 14 October	Wednesday 18 December	Monday 28 October - Labour Day Tuesday 29 October - Teacher Only Day

Kelly Club - Check us out on Facebook - [Click Here](#)

For enrolments and enquiries, contact the Supervisor on 021 744636 or kelburnnormal@kellyclub.co.nz
Kelly Club Programmes focus on giving children aged between 5 and 13 the opportunity to do things they enjoy in a safe, supportive, and encouraging environment.

Kelburn to Enrol go to www.kellyclub.co.nz

Kelly Club - Changes to Childcare Assistance - check if you qualify!

More families will now qualify for Childcare Assistance and the rate will increase for those already qualified, which means you may be eligible for assistance to send your child to Kelly Club. Please follow this link to find out more:

[Child Subsidies](#)

FOOTBALL HOLIDAY PROGRAMME

GREEN ROOM, WESTS RUGBY CLUBROOMS, IAN GALLOWAY PARK, WILTON

WEEK 1 & WEEK 2 – TUES, WEDS, THURS, 9.30AM-12.30PM

For children aged 5-12 years

Perfect for "Beginner's" and those just wanting to have fun. Come along and improve technique, knowledge and skills. We will focus on the core skills of control, dribbling, passing, tackling and shooting but MOST importantly having as much FUN as possible!

BOOK ONLINE AT www.kellysports.co.nz

NETBALL HOLIDAY PROGRAMME

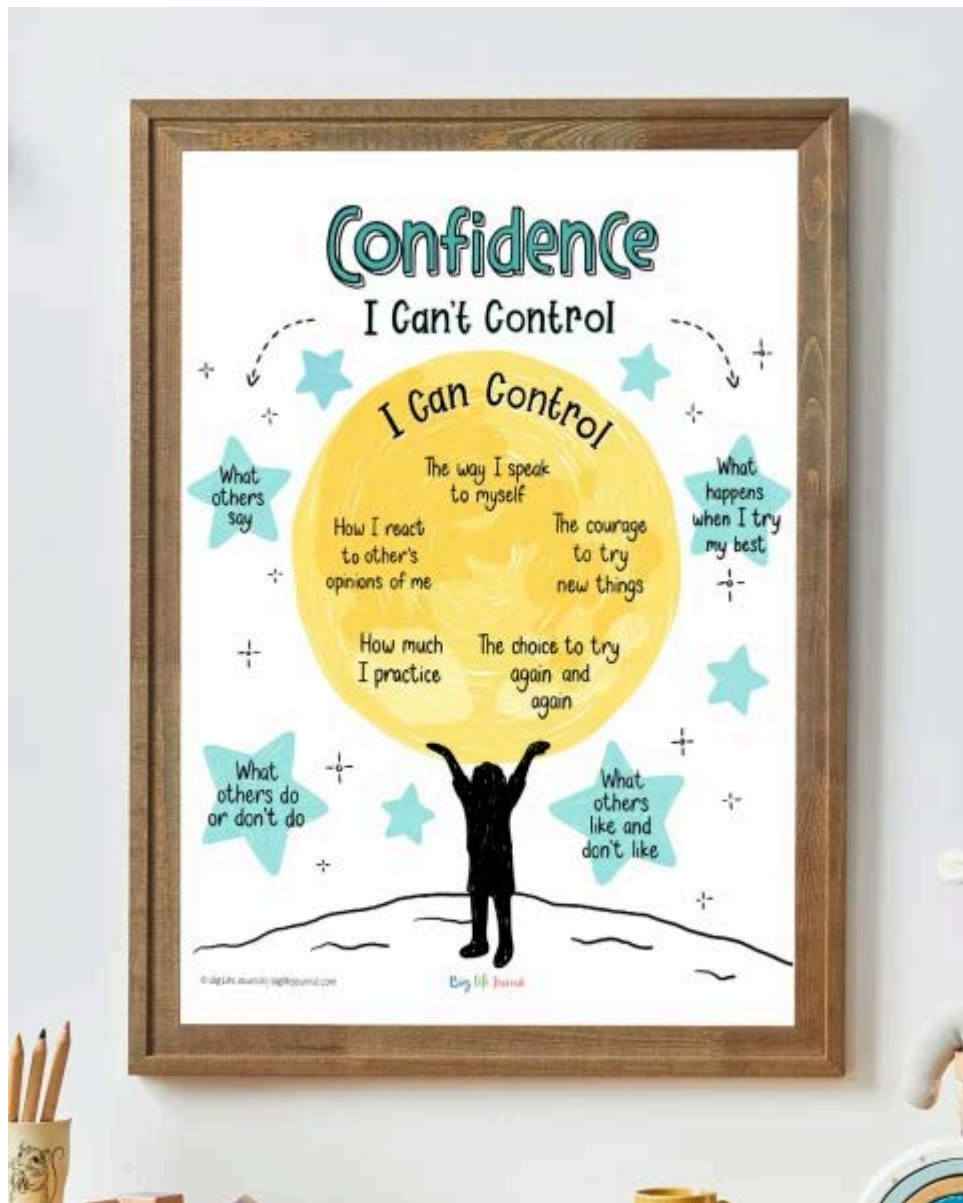
Raroa Intermediate School, Johnsonville - Week 1 Only!

Tues 9th, Weds 10th, Thurs 11th July - 9am-12pm.

Years 1-4 - For Beginners, these sessions will work on improving basic netball skills and help start to develop technical and tactical knowledge in accordance with the Future Ferns Programme. Children will work towards the following skills Passing, Shooting, Spatial Awareness and Defensive Skills.

Years 5-8 - These sessions will work on sharpening the basic skills - Passing and Shooting and we will start to develop a better understanding of the 7-side game and the different positional roles. We will use fun drills and games to develop and challenge young players focusing on the key skill areas for their level of development while also have fun!!.

To enrol go to www.kellysports.co.nz



Community Notices

Girl Guiding - Do you want your daughter to have fun whilst trying new things, learning leadership skills, exploring the outdoors and much more? We have spaces available in Karori for Brownies (aged 7-9 years). For more information, visit www.girlguidingnz.org.nz or email: karoriwestbrownies@gmail.com

If your child thrives on the energy of cartwheels, handstands, trampolining, flips, dancing, or even the art of parkour, they'll find their perfect match at Bigair Gym! Bigair Gyms classes not only promote fun, focus, and fitness but also provide a platform for children to acquire new skills and cultivate personal confidence and a sense of accomplishment. Safety and proper technique are paramount in the structured sessions, catering to everyone from beginners to those mastering advanced skills. Through the Bigairs Gym Programme, children experience focused learning and tangible progress, fostering a sense of achievement. The diverse range of classes includes **Gymnastics, Trampolining, Tumbling, Free Running (yes, parkour with flips!), and Cheerleading.** Inquire about Bigair **BIRTHDAY PARTIES** too!

Book online for Term 2 Gym Classes at www.bigairgym.co.nz

Bigair Gym Tawa: ph. 232 3508, e. office@bigairgym.co.nz at 10b Surrey Street, Tawa.

Kelburn Scouts have space for youth between the ages of 5-14. Keas age 5-8, Cubs 8-11, Scouts 11-14
 Every year we help 13,000 young people in New Zealand enjoy new adventures, experience the outdoors, make new connections, and gain confidence. This includes outdoor activities and Leadership. Come along and see what we are all about. To make contact with us, please email 1stkelburn1909@group.scouts.nz

FunSticks is running at the following location across the region.

NHS: Saturdays, 10am to 11am

Fraser Park: Saturdays, 8am to 9am

Elsdon: Saturdays, 9am to 10am

Karori/Kelburn: Tuesdays, 3:45pm to 4:45pm (starts Tuesday 14th May)

Maidstone: Wednesdays, 5pm to 6pm (Starts Wednesday 15th May)

Join the fun this weekend on the 11th May when the Junior Hockey Season starts!

Register online via PlayHQ: <https://www.playhq.com/hockey-new-zealand/register/5e7939>

Play Break Tennis

Hotshots Blue for pre-schoolers while parents can hop on other courts for a casual hit or a little exercise circuit!

☺ \$8 per session, book per session @ www.cyperus.co.nz.
 go to Junior Coaching, then select Tuesdays

☺ **Hotshots Blue** targeting 3&4 year olds fundamental movements co-ordination skills striking skills

☺ **Parents Break** borrow our racquets and have a casual hit with other parents exercise circuit if you are up for the challenge!



Darren Ward
 cdf@cyperus.co.nz
 021 870 978

1



Term 2 Little Dribblers!
It'll be HUGE!
Little-Dribblers.co.nz

- Football for to 7 Year olds.

- 7 venues to

Choose from

- New

Season starts 28

April

- Sign up online [HERE](#)

See you at the Park!

Enrolling now!

Northland Kindergarten is a local community Kindergarten supported by He Whānau Manaaki Kindergarten Association.

We offer quality learning programmes for children aged 2-5 years. Our teachers are trained, registered and experienced.

We support the Ministry of Education's 20 hours financially free education programme, and we extend this provision to our under 3's so we can welcome them to Kindergarten as well!

We welcomed ERO to our programme earlier in 2020 and are pleased to announce they rated us as very well placed. Check out their website....

You can email us for more information on enroll@northlandk.org.nz or phone us - ph 4759298; or just pop in to see us at 22 Albemarle Rd Northland.

We'll look forward to seeing you!

SHOW IN A WEEK!
School Holiday Program

July 15 - 19 2024

email : fastforwardmt@gmail.com
 for more details and registration.

9am - 5pm (Mon - Thurs) -
 Khandallah Presbyterian Church
 9am - 9pm (Friday) - Hutt City Church

7 - 15 Years old

KARORI REC

TERM 3
Years 1-4

WED	3:30pm-7:00pm	Y3 & 4 3 v 3 Miniball League	Contact your sports coordinator to join
THURS	3:30pm-4:30 pm	AcroTumble	Sign up online
	3:30pm-4:30 pm	Learn gymnastics fundamentals & execute saltos	
	3:30pm-4:30 pm	Year 1 & 2 Futsal Clinic	Sign up online
	4:30pm-5:30 pm	Year 3 & 4 Futsal Clinic	
		Learn-to-play programme	

Day/times TBC. Racket sports clinic. Email us to register interest & for more information

KARORI RECREATION
REGISTER ONLINE: [HTTPS://BOOKINGS.WELLINGTON.GOV.TZ/COURSE/ENROL](https://bookings.wellington.govt.nz/course/enrol)

Contact Us
04 476 8090
karori.rec@wcc.govt.nz

KARORI REC

TERM 3
Years 4-8

MON	3:30 pm-5:00pm	Volleyball Clinic	Sign up online
		Learn-to-play programme	
TUE	3:30 pm-4:30 pm	AcroTumble	Sign up online
		Learn gymnastics fundamentals & execute saltos	
	3:30 pm-6:30 pm	Y 5 & 6 Miniball League	Contact your sports coordinator to join
WED	3:30 pm-5:00 pm	Basketball Clinic	Sign up online
		Focus: shooting, dribbling, passing & defence	
FRI	3:30 pm-7:00 pm	Y7 & 8 Basketball League	Contact your sports coordinator to join

Day/times TBC. Racket sports clinic. Email us to register interest & for more information

KARORI RECREATION
REGISTER ONLINE: [HTTPS://BOOKINGS.WELLINGTON.GOV.TZ/COURSE/ENROL](https://bookings.wellington.govt.nz/course/enrol)

Contact Us
04 476 8090
karori.rec@wcc.govt.nz

2024 Fun Sticks

Years 1 & 2

Saturday Mornings
National Hockey Stadium: 10am to 11am
Fraser Park (Lower Hutt): 8am to 9am
Elsdon (Porirua): 9am to 10am

Tuesday Afternoon
Karori / Kelburn (Kelburn Normal School): 3:45pm to 4:45pm

Wednesday Late Afternoon
Maidstone (Upper Hutt): 5pm to 6pm

Register now via PlayHQ

Te Kāreti o Onslow Onslow College

Open Evening 2024 | Wednesday 12th June | 5:30 - 7:30 pm

We warmly invite you to the Onslow College Open Evening. This will be your chance to see the school learning spaces, talk to current students and Learning Area Leaders, and hear from our Leadership team.

Tours of the school: Between 5:30 - 7pm, our student guides will host small groups around the school to hear short presentations from our Learning Area Leaders.

Feel free to ask our students any questions about life at Onslow.

Presentation in the hall at 7pm: Our Tumuaki, Sheena Millar, representatives from the School Board and current students will share their experiences and information about Onslow College.

Please note: There will be NO parking onsite. Parking is available at Rāroa Intermediate, Rāroa Park, the Onslow student car park on Burma Road, and the surrounding streets - Burma Road, Haumia St., Bannister Ave.

Enrolments for 2025 are open now! Please scan the QR code to take you straight to our enrolment page:

Manaakitanga | Pursuing Growth | Whanaungatanga | Valuing Diversity | Kaitiakitanga



Te Kura Tuarua o Taraika ki Pukeahu Wellington High School Open Evening 2024

Monday 10 June
4:30pm - 5:45pm and 6pm - 7:15pm

You and your whānau are warmly invited to attend our Open Evening for families considering enrolment for 2025.

This is a ticketed event and pre-booking is essential.

For details and booking link please visit www.whs.school.nz/open-evening. Information packs will be available.

249 Taranaki Street Wellington 6011 | www.whs.school.nz | admin@whs.school.nz

City League Junior Football Holiday Program

ORIGINS WORLD CUP

Full Kit Included

3 Days of Football for players 5-10 years

Origins World Cup School Holiday Tournament

Are you ready to represent your heritage (real or imagined) and elevate your game?

Join us for an unforgettable football experience this school holiday!

What to Expect:

- Coaching: Learn from coaches and develop your skills and team match systems.
- Team Pride: Choose your team based on your heritage and play alongside passionate teammates.
- Official Kit: Receive a full AAA-grade football kit to wear with pride.
- Competitive Matches: Test your abilities in exciting tournament play.
- New Friendships: Make lasting memories and celebrate the beautiful game.

Who Can Join:

- Group 1: 5/6 year olds
- Group 2: 7/8 year olds
- Group 3: 9/10 year olds
- Group 4: 7/8 year olds

Tournament Dates:

- Group 1: July 8th - 10th
- Group 2: July 10th - 12th
- Group 3: July 15th - 17th
- Group 4: July 17th - 19th

Daily Schedule:

- 9:30 AM - Muster
- 10:45 AM - Morning Tea
- 12:30 PM - Lunch
- 1:15 PM - Activities
- 2:30 PM - Afternoon Tea
- 3:30 PM - Pick-up

Venue: Hutt Rec: TBC

Registration Fee: \$220 including kit

Football Classes

Coming soon on Saturday's & Sunday's in Wellington!

Fun, Award-Winning Football Classes to Give Your Child a Positive Introduction to Sport!

Little Kickers offers four different classes tailored specifically for children between 18 months and 8 years old.

Visit our website or email us for more information:



Would you like to learn to
PLAY BRIDGE THESE SCHOOL HOLIDAYS

Wellington Bridge Club
 17 Tinakori Road

Monday 8 – Friday 12 July
9am- 3pm
 \$20 per day

- Learn to play and/or improve in a relaxed and friendly environment
- Caters to all levels, no previous experience required
- 3 hours of bridge every day
- Other fun activities: board games, movies
- Morning and afternoon tea provided



TO REGISTER: wellingtonbridge@gmail.com or 027 209 7888

AGE 10+

YOUNG ARTISTS

Creative School Holiday Workshops

Spend your next school holidays with Inverlochty Art School!

Children's & Young Artists' Holiday Programmes

Our school holiday programme has been designed to challenge and encourage children & young artists who love art!

Both programmes offer a mixed media experience where drawing, painting and sculpture are used to touch the creative possibilities of various art genres.

FOR AGES 4-10 YEARS:
 MON-FRI: 9:15-12:45
 MON-FRI: 12:45-3:30 DAILY
 SUITE FOR AGES 10-12

FOR AGES 10-15 YEARS:
 MON-FRI: 9:15-12:45
 MON-FRI: 12:45-3:30 DAILY

123 of Painting for Teens
 MON- WED: 10:15-12:45
 12 AM - 2 PM DAILY
 SUITE FOR AGES 10-15

Journey through the basic elements of painting in acrylic paint in this introduction to painting workshop.

With an emphasis on simple beginnings, lessons will include colour theory, size, form & structure and composition.

[learn more](#)

Jewellery Making for Teens
 MON & SAT & MON 10:15-12:45
 12 AM - 2 PM DAILY
 SUITE FOR AGES 10-15

Craft your own rings in this introduction to metal smithed jewellery making!

In this special parent one session workshop with jeweller and artist Thom Richards, you'll learn some fascinating fundamentals to turn raw metal into stunning wearable rings.

[learn more](#)

Draw, Paint, Sculpt for Teens
 SAT/SUN: 10:15-12:45
 12 AM - 2 PM DAILY
 SUITE FOR AGES 10-15 YEARS

Explore drawing, painting and sculpting from

number eight

music by nature

Wellington's freshest vocal ensemble explores the earth and its nature through works by Joanna Marsh, Lisa Robertson, Shruthi Rajasekar and Caroline Shaw.

Sun 23 June 3pm
St Peter's on Willis

<https://events.humanitix.com/host/number-eight-choir>

In-Season Development Programme

U13 & U15

Key Dates

Registration Opens: 5th June
 Evening Chat #1: 9th June @6:30pm
 Evening Chat #2: 2nd July @6:30pm
 Registration Closes: 16th July

Development Days Training Block: 21st & 28th July
 4th Aug - 22nd Sept

[Register now via PlayHQ](#)

Training Locations

U13s Sessions: Sundays

Fraser Park: 9:00am - 10:30am
 NHS: 9:00am - 10:30am
 Kapiti: 9:30pm - 5:00pm

U15s Sessions: Sundays

Fraser Park: 10:30am - 12:00pm
 NHS: 10:30am - 12:00pm
 Kapiti: 5:00pm - 6:30pm

Lower North Island Tournament & Festival

UNDER 15 TOURNAMENT
 Sat 28th Sep - Tue 1st Oct

Tournament split into Boys and Girls venue locations
Boys: Wairarapa
Girls: Hawkes Bay

UNDER 13 FESTIVAL
 Fri 4th - Sun 6th Oct

Split into East and West based associations with Wellington providing teams to both locations
EAST Location: Wairarapa
WEST Location: Whanganui

COACH

RUNNING & TRI

MY MISSION
 TO MAKE SURE NO MUM LEAKS WHEN RUNNING!

DOWNLOAD YOUR FREE RETURN TO RUNNING GUIDE

- A POSTPARTUM GUIDE BY A MUM FOR MUMS
- FEEL CONFIDENT RUNNING
- REGAIN STRENGTH

sparklefitness@gmail.com | 021 828 9448

Follow me on: [facebook.com/sparklefitnessnz](https://www.facebook.com/sparklefitnessnz) | [@sparklefitnessnz](https://www.instagram.com/sparklefitnessnz)

Work-life balance myths and realities

Come join social worker, Juliet to talk all the ways we can balance and manage the chaos that comes with being busy parents!

Online, Wednesday 7th of August
 7:30 - 9:00 pm with Q&A

Bookings essential:
<https://events.humanitix.com/work-life-balance>

Only \$18!

real parents



Not sure what to plan for the kids over the weekend or after school? Visit us at Te Korōria! Our cafe has something for everyone, including an amazing soft play area for kids, and our coffee tastes great! We have created this space for the community to enjoy and would love for you to join us!

Soft play entry is just \$5, we are open 9-5pm Wed, Thur, Fri and 8-4pm on Saturday and Sunday.

Future-proofing: What it takes to grow great adults

Come join Real Parents Director, Anna Mowat to talk what it takes to build a strong, connected relationship with your kids while identifying your key parenting style and whether this is supporting your kids best!

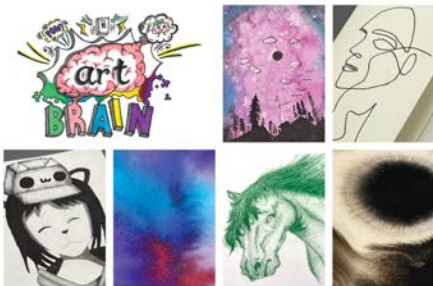


ONLINE

Thursday 4th of July
7 - 8.30pm

Bookings essential:
<https://events.humanitix.com/future-proofing>

real parents



WINTER 2024 CREATIVE HOLIDAY CLASSES Kids Creative Art Classes | Karori Arts and Crafts Centre

MONDAY 8 JULY | Cartoon, Anime, Chibi, Kawaii Character Creation Class

TUESDAY 9 JULY | 3D Cartoon, Anime, Chibi, Kawaii Creation Class

WEDNESDAY 10 JULY | Creative Science Art Class

THURSDAY 11 JULY | Landscapes & Celestial Skies Art Class

The above 4 classes are suitable for School Years 4 - 9

FRIDAY 12 JULY | Continuous Line Drawing & Self Portrait Art Class

This Friday class is only suitable for School Years 6 - 9

ALL CLASS TIMES ARE: 9AM - 3PM | COST: \$85 PER CLASS

COURSE OUTLINE: Step By Step Lessons | Positive Creative Mindfulness | Critical Creative Thinking | Project Planning & Development Skills | Technical Art Skills | Loads of Fun!

CONTACT: Lauren Poutawera | artbrainnz@gmail.com | 0220752189 | www.enrolmy.com/artbrain