



Where students learn creatively and strive for excellence preparing for lifelong learning
Kia auaha te ako a ngā ākonga me te whai i te iti kahurangi mō te akoranga tūroa

Te Ara Tupu Newsletter

Term Rua 2024

Nāu te rourou, nāku te rourou, ka ora ai te iwi

Everybody has something to offer, a piece of the puzzle, and by working together, we can all flourish.

Friday 3rd May

Kia ora Parents and Whānau,

Welcome back to school. What an action-packed term we are all going to have as we continue on building on our learning journey from last term. A special welcome to all the tamariki and whānau who joined us last term and to the new children and families starting this term.

All the Tupu Syndicate teachers would like to say a very big **thank you** to all the parents who helped out with our trip, Discovery Time, Easter crafts, and putting books away. We appreciate the time you give, as it helps us offer an exciting range of activities.



The highlight for the children and us last term was investigating the science behind “The Superheroes of the Sea” and our adventure to the Bait House and the nearby rock pools. This highlight flowed into many different curriculum areas.

We were impressed with how hard all the children worked in term one and how engaged, involved, and curious they were. We know that this positive attitude to learning will continue throughout this term. A very special welcome to our Tupu team member, Jodie Corcoran. We are so lucky to have her with us. She brings creativity and a powerful “can do” attitude to the team. What lucky new tamariki and families starting at our kura in Tupu Whā.

We wanted to share with you what we have planned for this term. If there is anything that you feel you can contribute to our programme, please don't hesitate to contact your child's teacher.

We are lucky to be attending the performance of *The Reluctant Dragon* by The NZ Playhouse on Thursday, May 23rd, at Kura. The cost for this show is \$6.50 per student.

Curriculum Topics

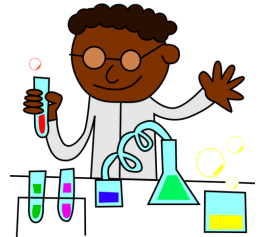
An overarching theme is 'Respectful Relationships'. This includes what makes a good friend, how to be a good friend, and ways to include and support others so everyone

feels welcome and part of our team. Respectful relationships are an important lifelong skill.

We have started the term by investigating Autumn through visual art, science, and English. We will explore the changes in the seasons and their effects on our environment and ourselves. We expect the children to be highly engaged and that the benefits will flow into their writing. Combining art with English is a key practice at Kelburn Normal.



We will continue with this focus on changes in Primary Science Week. Primary Science Week (13th to 17th May) is a nationwide event that spotlights the teaching and learning of science. In class, the children will be doing a range of fun and exciting experimental investigations. We welcome parent input and involvement in these experiments in the afternoons, so contact your Home Learning Team (HLT) teacher if you are keen.



Our major focus for the term is a science unit titled 'Extinct Animals in New Zealand and Beyond.' As you can imagine, this will be a hot topic as we look at dinosaurs and moas, to name a few, and what happened to them and why. If you have any resources at home to support this study that you would be happy to share, please send them along to kura. We will take great care of things that do come to in.

Mathematics and Statistics

We will be doing the unit Algebra, Patterns and Relationships for the first three weeks, focusing on sequential patterns, tessellations, and symmetry.

Our focus will then shift to five weeks of working on *addition and subtraction strategies and number knowledge*. *Number knowledge* work will reinforce forward and backwards counting sequences of whole numbers; number identification and sequence; knowing and using groups with five, within ten and with ten. *Number strategy* work will have the children using a range of counting, grouping, and equal sharing to solve addition and subtraction problems.



We will finish off the term with a two-week focus on time.

Don't forget to check out the activities and advice on Seesaw with our maths alive as well as www.nzmaths.co.nz, click on the 'Families' heading.

Literacy

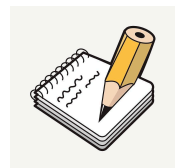
Our literacy programs are back in full swing. Your child should be bringing a reading book home every night, Monday to Thursday. On a Friday, your child should be bringing home their poetry book to share the week's poem.

Our weekly update on Seesaw will continue sharing the focus of learning from BSLA, especially around phonetic knowledge, by sharing ways to support your child at home. We value your support with this. We are holding BSLA whānau meetings on Wednesday 29th May at 5:30pm. There will be more information in week 2.



Sometimes, your child will bring home books they have already read; in this case, they are expected to re-read the book. This is because the focus could be on your child improving their fluency and/or expression. The process of re-reading known texts is a very important one. The children are engaged in re-reading known texts in the classroom programme for many reasons. Re-reading increases your child's understanding of the text and allows them to gain deeper meaning; it also provides an opportunity to practice fluency, expression, familiarisation with print concepts, and increase reading mileage.

Please remember to fill in the children's yellow home reading book. The teachers really value your feedback and input.



For writing this term, we are working on personal writing, expressive recounts, and descriptive character writing, which tie in with our integrated units of work. Children will also have regular handwriting sessions that will focus on correct pencil grip, forming lowercase and capital letters, and numbers correctly and legibly.



Arts

In visual arts, we will use collage, composition, and colour mixing to create artwork based on our topics and the children's interests. The artworks will complement drama and role-play and enhance and expand the children's understanding of the themes that run through them. This will stimulate the children's imaginative responses and creativity.

The children will be exploring space, movement, and keeping in time with the music through various dances.

Through music, the children will listen, respond to, and imitate the elements of beat, rhythm, and pitch.

Tui Choir and Kapa Haka

Another term of joyful singing is ahead for the year 2 and 3 tamariki with Miss Wilby each Wednesday for 30 minutes. All of Tupu join Matua Jeremy for our Tupu waiata on Friday.



Physical Education

This term, we are focusing on skipping, balls, and hoops and launching into a few folk dances. Keep an eye out for our folk dancing sharing closer to the end of term. We will also continue with our daily fitness to start the day.

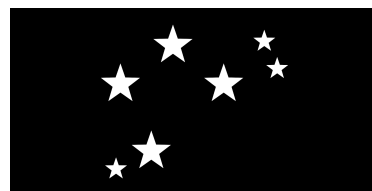
Discovery Time and book shelving

We are looking for parent support to put away our reading books. This doesn't take long (no more than half an hour), and you can pick a time and day after lunch to do this. Please contact Andrea if you are able to help us out.

We are also looking for family helpers for our ever-popular Discovery Time. This session is on a Friday from 9 to 10:30. There will be school assemblies every second week, so slots are limited. Sorry, we are unable to accommodate preschool tamariki. If you are interested, please contact your child's teacher.

Mahi Ngātahi

Every Monday, we have an investigation time from 9 am to 10:30 am. In these sessions, the children explore and investigate different mathematical concepts and scientific ideas, conduct experiments, and dive deeper into the wonderings that they have. This is a great opportunity to work collaboratively; the advantage of this children are able to learn from each other as they investigate their own questions and interests.



is

Te Reo

This term, all of Tupu are joining Jeremy, our kapa haka teacher, for half an hour of waiata. We are also celebrating Matariki later in the term.



Assembly Save the date on your calendar for Friday, June 14th, from 10:15 to 11am. Tupu Tahi will be leading the school assembly, and all the tamariki in Tupu will be sharing an item.

Helpful Reminders

The teachers encourage the children to work towards independence, and we would appreciate your help here, too. The children are encouraged to take responsibility for carrying their own school bag to and from school and to put their reading folders and contents in the right place in the mornings. We also would like to see the older children being encouraged to say



goodbye to their parents at the gate and walk into school by themselves. We don't want this to stop you from coming in and sharing what has been happening in the class or touching base with the teachers. Instead, we would like to see a balance between children's independence and sharing with their families. So you might like to choose a day with your child when you can come into the learning spaces in the morning or after school. Spend this time with your child so they can share and explain what learning they have been doing, including reading their storywriting book to you. Please make sure that your child has a warm jacket and/or a raincoat each day. We use many different materials in arts/crafts and discovery time, so if you have things such as ice cream containers, old birthday cards, cardboard rolls etc. that you can kindly donate, we would appreciate it. Just ask your teacher what they might need.

Pick Up and Drop Off

These are just a few points to make the mornings and afternoons run smoothly, as these are busy times. When you arrive in our building and step into Te Ara Tupu, you will see

that there are four main areas. Our learning space is open at 8:30am, and the bell to start learning goes at 8:50am. There will be numerous children in these areas, as well as mums and dads, and preschoolers. We ask that you leave before the bell goes at 8:50am. At the end of the day, there are several spaces where you can wait for your children, please do not come inside the building to wait. We would also appreciate it if you didn't stand against the glass, as this makes it tricky for us to see everyone. We welcome all parents and families to come in after school if you want to see work, or talk to us, however, please do wait until we have let all the children go. This is normally no more than a few minutes after the bell has gone.

Tupu Toru will leave at the end of the day through the link area. Tupu Rua, Tahi, and Whā will leave through the Piwakawaka door beside the playground.

Seesaw

We are continuing to add to your child's Seesaw this term to share with families and whānau. The tamariki love posting their work so you can see what is happening during the day with their learning. We have lots of interesting ideas about what to post and share this term, and no doubt the children will have too. We are also all enjoying reading your feedback, so please continue to share this on your child's Seesaw, as this creates a strong connection between home and school.



Footwear & Belongs

As you know, we are a 'no shoes inside' school, so slippers are welcome, as well as just socks or bare feet. It is important that children wear shoes to school that they can get off and on by themselves. Please can you make sure that all your child's belongings are clearly labelled, especially lunch and drink containers.

If you have any questions or would like to talk to the teachers about something, please feel free to email or come in and see us.

Me te mihi from the Tupu teaching team Andrea, Emily, Jodie, and Susie

Email Addresses

andream@kelburnnormal.school.nz

emilyw@kelburnnormal.school.nz

susieb@kelburnnormal.school.nz

jodiec@kelburnnormal.school.nz