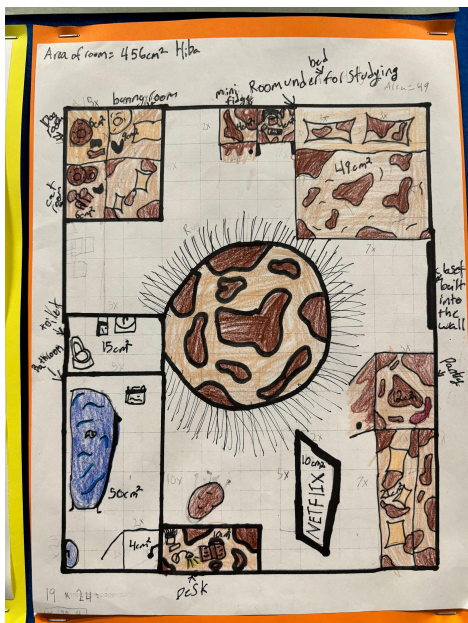


What has been happening in Whānui?

Play

It's nearly showtime, everyone! We can't wait to see you in the school hall next **Tuesday 2nd July at 5:30pm for our performances. Please drop your child off in the Whānui space by 5pm on Tuesday.** The tamariki have put their absolute all into these plays, and we are incredibly proud of the dedication and hard work they have shown during rehearsals. Over the past few weeks, the children have been focusing on delivering their lines with expression and confidence. They've been getting creative with music, experimenting with different sounds and rhythms to enhance their performances. Additionally, we've been rehearsing in the hall, utilising the lights and stage to our advantage, which has helped the tamariki gain a better understanding of stage presence and the importance of visual elements in a performance. We are excited to showcase the talent and creativity of our students. This event is a celebration of their efforts and achievements and we hope you will join us to support and enjoy the wonderful performances they have prepared.



Maths

This term, the tamariki have been engaged in hands-on measurement activities to enhance their understanding of this essential concept. Some of these activities include designing their dream bedrooms, where they applied their knowledge of dimensions by measuring and calculating the length, width, and area. They also experimented with different volumes of water in an interactive "Splish, Splosh, Splash" activity. Additionally, they conducted a mathematical investigation in the classroom to hone their skills in estimating and measuring using centimetres and millimetres, developing a more intuitive sense of measurement. These activities have provided practical and engaging ways for the tamariki to deepen their understanding of measurement. By integrating real-world applications and interactive activities into our lessons, the tamariki have been able to see the relevance of measurement in everyday life and build a strong foundation for further mathematical learning.

Celebration of Learning

Last Wednesday, we had our Celebration of Learning evening. It was wonderful to see so many of you join us to celebrate the remarkable progress and achievements of the tamariki over the past two terms. We take immense pride in the collective efforts of the work Whānui produces, and so it was great to see our students lead their whānau through the space and show off their hard work. While this is only a snapshot of the wonderful work we do here at Kelburn Normal School, it is emblematic of the excellence we aim to achieve.

Performing Arts groups at school - reminder

We have a number of groups on offer at Kelburn Normal School that every child can get involved in. Being involved in the performing arts can have multiple positive benefits for children, including improving their cognitive skills, enhancing their creativity and supporting their overall well-being. We will be encouraging your children to join Xylobeats, Orchestra, Piccolo, and Kapa Haka, so please promote the groups at home as well. All groups have spaces available for children to join at the beginning of Term 3. If your child no longer wishes to participate in their performing arts group they can only leave at the end of the term and in consultation with the group leader.

Home Learning

In Whānui, we recognise that our students engage in numerous extracurricular activities outside of school. However, we emphasise the importance of ensuring that everyone commits to the following two activities every evening:

- Reading before bed - at least 30 minutes. This could involve reading a chapter book from school, reading a chapter to someone in their whānau or listening to audio books.
- MathsWhizz - 30 minutes a week. MathsWhizz serves as an educational resource that reinforces the significant learning occurring in the classroom. If your child does not have their login information or has forgotten it, please remind them to ask their teacher for the details.

If you have any questions regarding your child's learning, please do not hesitate to contact one of us.

Best wishes,

Niamh Kelly, Rebekah Rasmussen, and Hugo Miller

niamhk@kelburnnormal.school.nz

rebekahr@kelburnnormal.school.nz

hugom@kelburnnormal.school.nz