

KELBURN NORMAL SCHOOL NEWSLETTER

NGĀ TĀTARAKIHI O AHUMAIRANGI PĀNUI

THE BIRD'S EYE VIEW ISSUE 39 WEEK 9, TERM 4 2024

RĀHINA 9 HAKIHEA ~ MONDAY 9 DECEMBER



Where students learn creatively and strive for excellence in preparing for lifelong learning
Kia auaha te ako a ngā ākonga me te whai i te iti kahurangi mō te akoranga tūroa

Tuesday 10 December - Whanake Rogaine - 9.30am - 12.30pm, Whānui Swimming 10am - 1pm, Māia Rogaine 12pm - 3pm
Wednesday 11 December - Band concert @ 1 pm
Thursday 12 December - Y8 Leavers Celebration
Friday 13 December - Andrew Bird's Poroporoaki (farewell hui) at 10 am, ice-block day
Sunday 15 December - Carol Service at St Michael's (Lyrica) @ 5pm - 6 pm

Kia ora koutou e te whānau,

As we enter our last full week of 2024, we remain in good shape. This week, we have some Rogaine in the Gardens, the band concert on Wednesday, our Y8 Leavers celebration on Thursday afternoon, Tupu have Christmas fun on Thursday, my last school hui on Friday, ice-block day, and Lyrica are singing at St Michael's on Sunday. Reports also come home this week. It is full right to the end.

I made a call out at school hui on Friday to praise the staff for their mahi over the last month. It is a big effort to get things done to close off the school year, and the staff have really put in the extra hours and the collaborative mahi to ensure things have been done well - all on top of keeping the learning programme ticking along. It is hugely appreciated - we have such a great team at Kelburn, we are very lucky!

I just want to take the time to applaud the natural leadership provided by our tamariki throughout this year. This can be through the student council, road patrollers, playground buddies, PE shed monitors, and librarians or just a Māia student. We have over 100 different children involved in these roles, just quietly going about their business each day to make five key aspects of our school run smoothly - led by our children's community but working with a key adult. Add in the natural leadership and tuakana teina leadership model provided by our oldest children in the music and arts ensembles - this quiet, yet committed natural leadership is the best model for a primary school.

School Donation and Activity Donation:- As always, we have had a good response in 2024 from whānau, but we are still sitting below our budgeted figure for 2024, so we do need your contributions to break even. Things such as camps, swimming, for example, are not funded through our Operations Grant, and while we do acknowledge that times are tough, we really do appreciate the school donations and activity contributions as they enable us to cover the costs of the additional activities and opportunities that our tamariki have had as part of their experience at Kelburn. This year, the General School Donations have enabled us to invest in literacy and numeracy, additional teachers to keep the class sizes smaller, learning support staff, sports opportunities and extra PE equipment, keeping up the technologies which the school supplies...and much more. These tangible investments are only possible because whānau contribute to the School Donation. So, if you still need to balance up your contributions, it is much appreciated...and of course, tax-deductible!!

Celebration of Learning - Thank you for joining us last week for the Celebration of Learning. It is an important process for the tamariki to share their work with you in their own voice and we thank you for taking the time to experience this with your child.

WGC Drama Sharing - Last Wednesday, we hosted a group of students from WGC for drama engagement. The students worked with our tamariki on a range of activities designed to build confidence, use creativity and have fun.



School hui last Friday - thank you whānau for coming to Whanake school hui sharing on Friday where Tūi choir, junior kapa haka and Little Xylofun shared their mahi. We loved hearing from Whanake and they shared their recent work as well. Ka pai.

Rogaines - Tomorrow, Tuesday, December 10th, Whanake (9:30am - 1pm) and then Māia (12pm-3pm) will head to the Botanical Gardens for their annual Rogaine. This team-building, map reading, walking/jogging/running, and clue-finding event has been an end-of-year fixture at Kelburn for many years now and is always popular with tamariki.

School Teaching Team 2025

As we look forward to next year, we have confirmed our staffing lineup for 2025. Until a principal appointment is made, Danielle Sanders will act as principal. Joining the teaching team in 2025 are Kyra Mowbray who joins us from the US and will join the Whanake team in Y3-4 and Tom Pearce, who joins us as a part-time teacher in Y7-8 for Libya Munn.

ACTING / DEPUTY PRINCIPAL - Ms Danielle Sanders

ASSOCIATE PRINCIPAL - Mrs Libya Munn

Team Leader - Miss Susie Brown, Tupu Tahi - Y1

Teacher - Miss Jodie Corcoran, Tupu Rua - Y1

Teacher - Miss Andrea Molloy, Tupu Toru - Y2

Teacher - Mrs Marianne Blair, Whanake Tahi - Y2/Y3

Team Leader - Miss Sophie Bishop, Whanake Rua - Y3/4

Teacher - Miss Kyra Mowbray, Whanake Toru - Y3/4

Teacher - Mr Hugo Miller, Whānui Tahi - Y5/6

Acting Team Leader - Ms Rebekah Rasmussen, Whānui Rua - Y5/6

Teacher - Miss Emily Wilby, Māia Tahi - Y7/8

Team Leader - Mrs Libya Munn, Māia Rua - Y7/8

Release Teacher - Tom Pearce, CRT Māia Rua - Y7/8

Release Teachers - Jenny Cossey, Jo Hamid

English Language Teacher - Rachel Smith (also CRT)

End of Year Reports - Tamariki end-of-year reports will be available online at the end of this week 9. The report summarises the children's general progress and achievement in key aspects of the curriculum and includes a set of comments that are both reflective of what they can do as well as being future-focussed by identifying what they need to work on in the key curriculums of English and maths, and a general comment summarises their Key Competencies for learning. Your child's 2025 home learning team will also be included.

Student Council Ice Block Fundraiser - This is a reminder about the Student Council Ice Block Fundraiser to support Paddy's wonderful fundraising efforts for a defibrillator for the Kelburn Community, is on Friday, 13 December. We have extended orders until the end of Tuesday. To ensure your child does not miss out, please [fill in the Google form here](#) to order your child's ice block and pay \$2.50 into the school's bank account 12-3223-0190001-00 using your child's name and SC as a reference. Thank you.

Weeding of School Gardens - a special thank you to the parent who recently took the time to weed our school gardens and remove the noxious climber. Your dedication to keeping our spaces free from invasive weeds is deeply appreciated.

Security Cameras - Following on from the recent arson of the shade cloth and damage to the turf at Kelburn, and consistent damage at other kura, the Board has resolved to install security cameras to help keep our grounds safe and secure for all of us. With respect to student privacy, it is intended that these cameras will operate out of school hours only to ensure that our grounds are used in an appropriate way for all our community to enjoy.

2025 Whānau/Parent Conversations - at the beginning of next year, we will hold Whānau/Parent Conversations during our Teacher Only Day on Friday, 31 January 2025, just before school commences on Monday, 3 February. These important conversations are an opportunity for whānau to talk to their child's new teacher to share insights that would be useful for the teacher to know. Bookings for these conversations will open on Tuesday, 23 January. This will be an opportunity to drop off your child's 2025 stationery packs. Below in the newsletter is a [link](#) to the Qizzle website for ordering your 2025 stationery packs. Please have these packs delivered to your home, not the school.

We look forward to connecting with you to start the year on a positive note! Keep an eye out for more details closer to the time.

Last day of the year - A reminder that school on Wednesday, 18 December at midday.

Ngā manaakitanga,
Andrew

Tumuaki Mr Bird's Poroporoaki (Farewell) - After eight fantastic years at the helm of the Kelburn Normal team, Andrew, our dedicated tumuaki, has decided to lift his oars and step out of the waka and join a new club. We warmly invite you to join us at our poroporoaki so that we can honour Andrew Bird's contribution to our kura. This farewell assembly will be held on Friday, 13 December at 10 am and will be followed by a morning tea in the hall. Come along and personally thank Andrew for his invaluable mahi in our kura. We look forward to sharing this special occasion with you.

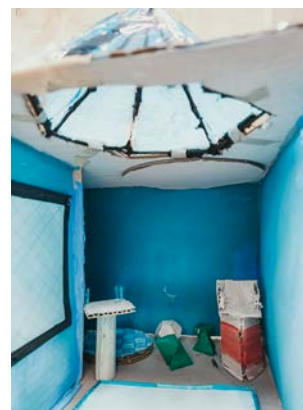
What's happening in Māia?



Maths & Te Reo Māori: Geometric Atua

Students have captured the essence of the Atua in sculptural form using a range of polyhedra. Using protractors, rulers, and compasses they measured and mapped out nets for three-dimensional shapes that make up these models. See if you can spot how each pair have met the mathematical criteria!

- At least two different platonic solids (not including a cube)
- At least three other non-platonic polyhedra.
- A frieze group tessellation featuring rotation in the design
- A wallpaper group tessellation.
- An object plus two enlargements (the original object, the object enlarged by a scale factor of x and a scale factor of y . These can be arranged in a sequence, or exist separately within the model.
- A cylinder or a cone
- The design needs to have a line of Symmetry



Staff vs Student Netball Game

As is tradition, last week we had our annual staff vs year 8 netball team game. The staff won this round... This was entirely due to our parent helper and the year 8 boys who enthusiastically subbed on for teachers when



they got tired. Activities like this are looked back on fondly by our past students, and teachers alike.

Unicef Parliamentary Children's Rights forum

We were fortunate to be invited to this breakfast event at parliament where we were lucky enough to see several MPs in their natural environment, including the Prime Minister himself! Thank you to the parents who delivered their children to parliament at 7am! Students enjoyed listening to Unicef youth ambassadors speaking about the rights of children and how to improve outcomes for tamariki in Aotearoa. There was also a panel discussion including MPs from a variety of political parties answering questions about issues impacting young New Zealanders today.



I think it was great listening to the different perspectives and hearing about what the UNICEF ambassadors are doing to change the world for the better.

- Campbell

I was happy to see the children's rights discussion because children make up a lot of the population and it's important for us to have rights and a voice. We don't just turn 18 and become smart, we have knowledge now and should be listened to now.

- Sienna

I think it was great listening to the MPs talking because they are the ones that make decisions. It was cool to see the youth ambassadors speak because they had lots of interesting knowledge about children and children's rights... and they were just recently children.

- Eliot

Whānui update

Literacy - speech finals

Have you ever wondered what school in Germany is like compared to schools in New Zealand? Or considered the balance between creative choices in education and giving students more choice and agency? If you attended our Whānui speech finals on Monday, you would have heard about these topics and more. Well done to Louis, Zoë, Greer, Makayla, Izzie, Immy, Isla and Elliot for presenting your speeches in front of your parents, Whanake, Whānui and Māia. You all did a fantastic job! A huge congratulations to Greer for coming third, Louis for coming second, and Zoë for taking first place, well deserved. The fun doesn't stop there! In the remaining weeks of the term, we'll be using our persuasive writing skills in a variety of creative ways. Students will be creating teacher advertisements to highlight the qualities they think make an ideal educator, write school reports for their peers (and even their teachers!) and craft four-sentence speeches to refine their ability to communicate ideas effectively.



Numeracy

Across Whānui, we have used our knowledge of geometric shapes and their properties to create geometric drawings. Students were



tasked with incorporating specific elements into their designs, such as at least one curved line, like an arc or circle, and at least on polygon (four or more sides), such as a pentagon or hexagon. They also had the option of including a vanishing point to explore perspective and 3D shapes to add depth to their drawings. This activity not only reinforced the students' understanding of geometric concepts but also allowed them to apply mathematical knowledge in a creative context. By identifying, drawing, and combining different shapes, students practiced spatial reasoning, problem solving, and precision, which are essential skills in geometry and broader mathematical learning.



Looking Ahead - Event Dates -

Term 4, 2024

You can see the times and add these events to your calendar by using the KNS App

Week	Date	Event
Week 9	Tuesday 10 December	Whanake Rogaine - 9.30am - 12.30pm, Whānui Swimming 10am - 1pm, Māia Rogaine 12pm - 3pm
	Wednesday 11 December	Band concert @ 1 pm
	Thursday 12 December	Y8 Leavers Celebration
	Friday 13 December	Andrew Bird's farewell hui at 10 am
	Sunday 15 December	Carol Service at St Michael's (Lyrica) @ 5pm - 6 pm
Week 10	Monday 16 December	Xmas hui @ 2pm
	Tuesday 17 December	Whānui Swimming 10am - 1pm
	Wednesday 18 December	School finishes at 12 noon

It's great that your child is doing road patrol in 2025. Can you help them out?

We are seeking **parent helpers** to supervise the 2025 student road patrollers.

Road patrol duty is:

- 30 minutes
- once a week
- before **or** after school

Join the **friendly team** of parent volunteers who assist in keeping our children safe. (cover is available if a volunteer has another commitment during their normal shift)

This is a great way to **be seen** helping the school community, and saves the school money!

Please text Claire on 021 537 567 if you are able to help.

P.S. Orange really suits you :)



PTA News

Yummy Stickers

Thank you to everyone who submitted "Yummy" stickers/cutouts. This year we submitted 3316 stickers/cutouts. The Yummy Fruit Company have advised that we have \$455 to spend on sports gear. Keep munching those "Yummy" apples and collecting the stickers/cutouts for next year. You can find the Sticker Collection Sheet [here](#)

School Notices - [click the link to view previous school notices](#)



KNS Parent Chat WhatsApp Group

The PTA has a WhatsApp group to enable all the KNS community to communicate with each other about all things KNS. If you want to join this group, please email us on pta@kelburnnormal.school.nz with the following information:

- Your name
- Your phone number
- Your child's name and class

School App - Contact Details - Please check your contact details on the school app to ensure we have the correct details. If changes are needed please email these to admin@kelburnnormal.school.nz

Teacher Messages - a sort option has been added to the teacher messages section on the school app so parents can easily search for the latest message in date order.

Downloading the app - for those needing assistance with downloading the app please check the app [login video](#) on our website for parents

EzLunch Menu - Subway Wednesday / Pizza Thursday / Sushi Friday [Click here for the Menu](#)

School Clubs and Ensembles Timetable

Monday	Tuesday	Wednesday	Thursday	Friday
Xylobeats - (Ys 4,5, 6) 8.30 - 9.30am Katharina Mahler Room	Orchestra - 8.30 - 9.30am Katharina & Rachel Mahler Room	Piccolo - (Yrs 4, 5, 6, 7) 8.30 - 9.30am Anna Sedcole Mahler Room	Lyrca - Yrs 5 - 8 8.30am-9.30 am Anna Sedcole Mahler Room	Little Xylofun (Ys 2 & 3) 8.30 - 9.00am Katharina Mahler Room
Kapa Haka - Y1-4 1.30 - 2pm Miss Bishop & Jeremy Hall	Code Club - 1.10 - 1.40pm Miss Bishop/Miss Sanders Māia space	Tui Choir - (Years 2 & 3) 8:50am Ms Wilby Hall		Kapa Haka - Yrs 5 - 8 8.30 - 9.30am Mrs Smith&Ms Rasmussen Hall

		Chess Club - 1.10 - 1.40pm Mr Miller Māia space		Eco Club - 1.10-1.40pm Miss Molloy Tupu space
--	--	---	--	---

School Term Dates 2024

Term	Start Date	End Date	Public Holidays/Teacher Only Days
Term 4	Monday 14 October	Wednesday 18 December	Monday 28 October - Labour Day Tuesday 29 October - Teacher Only Day

School Term Dates 2025

Term	Start Date	End Date	Public Holidays/Teacher Only Days
Term 1	Monday 3 February	Friday 11 April	Thursday 6 February - Waitangi Day Friday 21 March - Kāhui Ako Teacher Only Day
Term 2	Monday 28 April	Friday 27 June	Monday 2 June - King's Birthday Friday 20 June Matariki
Term 3	Monday 14 July	Friday 19 September	Friday 29 August - Teacher Only Day
Term 4	Monday 6 October	Thursday 18 December	Monday 27 October - Labour Day Tuesday 28 October - Teacher Only Day

Kelly Club - Check us out on Facebook - [Click Here](#)

For enrolments and enquiries, contact the Supervisor on 021 744636 or kelburnnormal@kellyclub.co.nz

Kelly Club Programmes focus on giving children aged between 5 and 13 the opportunity to do things they enjoy in a safe, supportive, and encouraging environment.

Kelburn to Enrol go to www.kellyclub.co.nz

Kelly Club - Changes to Childcare Assistance - check if you qualify!

More families will now qualify for Childcare Assistance and the rate will increase for those already qualified, which means you may be eligible for assistance to send your child to Kelly Club. Please follow this link to find out more:

[Child Subsidies](#)

Community Notices

These are provided as a service to the community and do not necessarily reflect the policies and practices of the school.

[Click link to view](#)





Enjoy a conversation



Get lost in a book



Ask yourself how you're feeling right now



Put your hand on your heart and feel it

10 WAYS TO BE IN THE PRESENT MOMENT



Take 5 deep breaths of fresh air



Play your favorite game just for fun



Write in a journal



Taste, smell, touch the food you're eating



Pay attention to someone next to you



Pause and notice the world around you